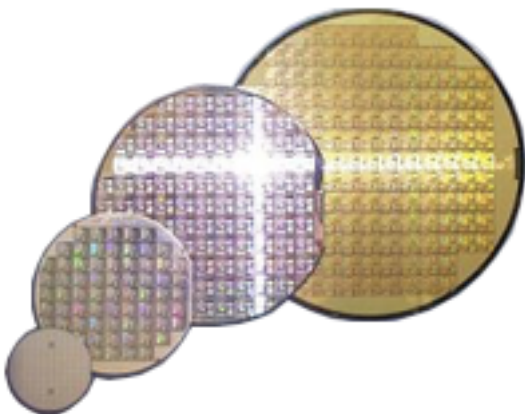


If you control temperature of aggressive liquids like acids, you better look for solution that have:

- ✓Chemical compatibility
- ✓Tightness (one piece concept)
- ✓Requested type of sensing element
- ✓Custom design for existing connection
- ✓Reliability



*„...Tailored to your application...”*



**SPECIFIC**

Designed for you



**MEASURABLE**

Impacts your business



**ACHIEVABLE**

From idea to success



**RELEVANT**

Serves your application



**TIME-BOUND**

Built on time

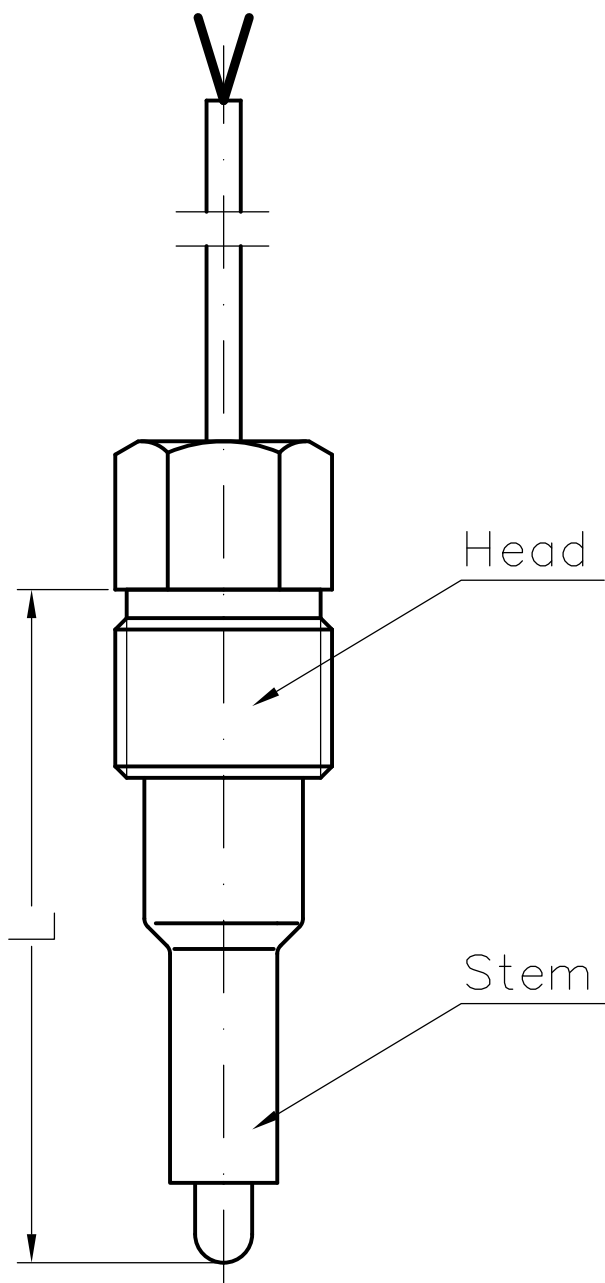
IDEATION

DESIGNING

PROTOTYPING

TESTING

MANUFACTURING



Technical specification	
Operating temperature	0..130°C
Max pressure	2 bar
Housing	IP 67
Accuracy	Acc. to sensing element
Electrical connection	Cable or customised

TempSys T - Head - Length - Cable length - Output

P-Pil 1/2  
F-Fla 1/2  
S-Special

[mm]

[mm]

K-Thermocouple K  
J-Thermocouple J  
R- RTD Pt100  
S-Special

Consult factory for more options. **S-Special:** Please provide more details.

IDEA

DESIGN

PROTOTYPING

TESTING

MANUFACTURING

**OEMSYS**  
smart  
system  
solutions

OEMSYS Sp. z o.o.  
Fabryczna 1  
34-600 Limanowa  
Poland

DTS/0018 Rev.1